



Settlement Support (Rotorua)

3rd Floor, 1136 Arawa Street,
Private Bag 3029, Rotorua
T: 07 3500 533 or 07 348 4199 ext 7054
E: ssnzrotorua@rdc.govt.nz
W: www.rotorua-living.com/settlement

Inside this issue:

- Celebrate Poetry
- What's On
- Breastfeeding Week 1-7 August
- Special events at the Museum
- Community Sports and Arts
- How to Deal with Difficult Customers
- Immigration NZ News



Heather McAllister
Settlement Support
Co-ordinator

"If you have an event or something of interest that you would like to include in the newsletter, please send it to me by the 20th of the month."

This newsletter focuses on highlighting local providers of services relevant to migrants and newcomers, upcoming events and items of interest.

poetry
in Rotorua

from Ranolf and Amohia

"From our life of realities -
hard - shallow-hearted,
Has Romance -
has all glory and life departed
From the workaday world
all the wonderment flown?
Well, but what if there gleamed
in an Age cold as this,
The divinest of Poets'
ideal of bliss?"

by Alfred Domett (1872) N.Z. Premier, poet

Thursday July 29
Rotorua Night Market 5-8pm

Friday July 30
Poetry Encounters Cafes & Street 11am -2pm
The Rotorua Library Store Cafe 5.30 - 7pm

www.creativerotorua.org.nz/ ph 07 3620888

Poetry at the Night Market - 29 July 5 pm - 8 pm
Readings from local poets. live music, poetry "play."

Poetry Encounters

City Focus, 30 July 11am - 2pm

Listen to poetry, create your own. *You know the magnetic words you put on your fridge, well we have them life size and invite you to come and make street poetry*

In streets and supporting cafes, 30 July 11am - 2pm
Poems will be performed and give away post card poetry

Poetry Red - hosted by Brian Potiki

Library Store Café 30 July 5.30-7.30 pm

Everyone is invited to bring a poem to read.



U&I HANGI LEARN MAORI

Sat 31 July. 10am -1pm at Whakarewarewa
Celebrate Maori Language Week. Cost \$12

Multicultural Rotorua in association with Whakarewarewa-The Living Thermal Village (Tryon Street) invite Rotorua Migrants and Newcomers to a three-hour Maori cultural experience and language learning to celebrate the 2010 Maori Language Week (26 Jul-01 Aug). Arrive at 9:45am Tour starts 10am. Cultural Show 11:15am and Hangi at 12pm For enquiries email us at multiculturalrotorua@gmail.com



a project of Rotorua Multicultural Council Inc., Newcomers Network and Whakarewarewa-The Living Thermal Village. Images-cultural performers and plated hangi meal courtesy of Whakarewarewa. Supported by Rotorua Arts Village-Te Whare Toi.

For further information and to register for any of the workshops,
contact Heather McAllister on 07 3500 533 or at ssnzrotorua@rdc.govt.nz

What's On



Fri, 30 July Meet Lale from Samoa
Fri, 27 Aug Meet Hema from Malaysia

When: Every last Friday of the month,
12.10–12.50 pm

Venue: Rotorua Arts Village (RAVE)
Corner of Hinemaru & Hinemoa Sts, Rotorua

Each month a migrant tells of their culture and of their experiences of settling into New Zealand.

For further information, contact:

Judy on 350 2395, judy.winiata@englishlanguage.org.nz
Heather on 350 0533, ssnzrotorua@rdc.govt.nz

Phoenix Variety Country Music Club

Sun, 8 Aug 2010 1-5pm
Ngongotaha Rugby League Club Rooms
Neil Hunt Park, Tarawera Rd, Rotorua



We are a Variety Country Music Club who offer a platform for singers to perform their craft.

All age groups welcome just bring your words or your song.

Backing band is supplied for your enjoyment and use.

Cost: \$4.00

Contact: Elaine Rangitutia on 07 345 6599 or on
cgawardz@phoenixvcmc.co.nz



0800 GIVE BLOOD
0800 448 325

Official website of the New Zealand Blood Service

Thurs, 12 Aug 2010, midday - 8pm

Fri, 13 Aug 2010, 8am – midday

Rotorua Soundshell on Rotorua lake front

Please come along and donate blood - we would love to see you! After all, it isn't every day you can do something to save someone's life - but that's exactly what you do every time you donate blood.

Blood is a priceless gift - a lifesaver.

Contact Karrie-Ann on 07 349 5141 or 0800 836 837

Kids Fish Out – Rotorua Anglers

Sun, 15 Aug 2010, 9am – 3pm
Ngongotaha Hatchery Paradise Valley Rd,
Ngongotaha



Rotorua Anglers Association in conjunction with Fish and Game, are having another kids fish out.

Children aged from 6 years to 14 are invited to learn the art of fly fishing.

This is with tutors teaching casting skills and then shown the children's pool where they are guaranteed to catch and take home their very own rainbow trout.

There is a sausage sizzle and soft drinks available, also teas and coffees. for all enquiries please phone Terry Wood 07 345 5587.

artsMAD

Mon, 16 Aug 2010 from 5.30pm
Pheasant Plucker, 1153 Arawa Street

Short presentations from artists, designer, architects

What a Woman Wants

Tues, 17 Aug 2010
Rotorua Citizens Club,
Corner of Arawa and Rangiuuru Streets, Rotorua



Farmers and fashion stylist Lisa O'Neill are joining with Plunket to inspire women around New Zealand to sort out their wardrobe and never have that feeling of 'having nothing to wear' ever again.

Stylist Lisa O'Neill has spent the past 18 years in the fashion industry, in all types of roles from retail, wholesale, and buying and marketing, to six years styling and directing fashion photo shoots.

Cost: \$30 Purchase tickets via www.ticketmaster.co.nz
Freephone: 0800 836 837

Nutritional Talks

Mokoia Community Centre, 297 Vaughan Rd, Rotorua

10th Aug, 7-8.30pm

Cooking and Eating for Men

We will talk about common men's health issues, and go through food labels and some recipes from scratch.

26 Aug, 10am – 11.30am

Active ageing: Nutrition for older people

Register with Robin on 345-5917

Breastfeeding Week

1-7 August 2010



Breast Feeding in the Workplace

Under the 'Employment Relations (Breaks, Infant Feeding, and Other Matters) Amendment Act 2008', employers must ensure that, so far as is reasonable and practicable in the circumstances:

- Appropriate facilities are provided in the workplace for an employee who is breastfeeding and who wishes to breastfeed in the workplace.
- Appropriate breaks are provided to an employee who is breastfeeding and wishes to breastfeed during a work period.

Employers can support breastfeeding employees by providing four simple things:

1. good communication
2. time
3. space
4. support

Further information:

Breastfeeding Friendly Workplaces

The website provides information for employers and employees about managing breastfeeding and working, and guidelines for creating Breastfeeding Friendly Workplaces. www.bfw.org.nz

www.workwell.health.nz/workwell_breastfeeding

www.breastfeeding.org.nz

World Breast Feeding Week

World Breastfeeding Week is celebrated every year from 1 to 7 August in more than 120 countries to encourage breastfeeding and improve the health of babies around the world.

It commemorates the Innocenti Declaration made by WHO and UNICEF policy-makers in August 1990 to protect, promote and support breastfeeding.

Rotorua and Taupo Breastfeeding Groups

Meet monthly facilitated by the Lakes DHB HEHA Manager. To link in with either of these network groups email wendy.donaldson@lakesdhb.govt.nz or phone (07) 3497955 Ext 8936

The Big Latch On

The Big Latch On is taking place on **August 6th at 10.30am** at venues around New Zealand as part of World Breastfeeding Week.

The Big Latch On will be turning six this year and they are aiming to once again break the record for the most women simultaneously breastfeeding.

It is an opportunity for breastfeeding mothers to be supported and celebrated in a safe environment whilst being recognised worldwide for their breastfeeding efforts.

Local venues:

Rotorua Plunket Classroom

1436 Pukuatua St, Rotorua
Contact Vicki Lidington Tel: 07 345 4478

Indigo Café

1154 Hinemoa St, Rotorua
Contact: Cherie Flay Tel: 07 348 7445

Reporoa Play Centre

20 Massey Road, Reporoa
Contact: Victoria Langford Putt Tel: 07 345 4478

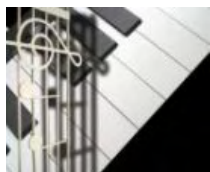
What's On @



Exhibitions

Sounds Amazing

Exhibition by Te Manawa Museums Trust
Until : Sunday, 8 Aug 2010



Learn about the science of sound and how music is made in an interactive exhibition.

Explore how it is created and measured, how it travels, and the technology of sound manipulation.

Discover how musicians get different notes from their string, wind or percussion instruments. You'll be able to find out by strumming giant harps, striking gamelans, playing the slap-a-phone (bongo pipes), or tickling the ivories of a giant keyboard.

Collectors in the Community: John Danks – Radiojoy

Until : Wednesday, 15 Sept 2010



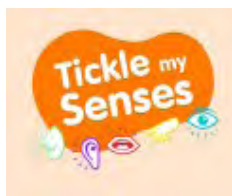
John Danks collects radios – a great many of them exotic novelty art radios.

Rotorua collector John Danks began his fascination with radios as boy.

Over the years he has accumulated a huge archive, with a particular passion for radios made by a small manufacturer, F J Mountjoy of Auckland. Pearlescent dials, tombstone shapes, even a radio in the shape of a robot – these and many more will go on show to recapture the golden years of radio.

Tickle My Senses

Developed by TheNewDowse
Until Sunday, 19 Sept, 2010



Tickle My Senses encourages young visitors to experience art with all five senses.

The exhibition includes a variety of hands-on interactives and features over 40 artworks from TheNewDowse collections.

Designed to appeal to children Tickle MySenses is playful and quirky.

Special Events

Rotoiti Safari – Don Stafford

Sun, 8 August 2010, 11am and 2pm



Don Stafford and Kerry Fowler's last documentary together, takes us on a rich historical journey exploring the many inlets and islands of Lake Rotoiti.

During 2009 and early 2010 Don Stafford and Kerry Fowler worked on what was to be their last documentary together. The resulting film journey takes viewers around Lake Rotoiti looking at a rich lode of historic places – often with accompanying stories of high drama. The story is told with Stafford's inimitable skill as he explores the many inlets and islands of the volcanic lake.

Rotoiti Safari – Don Stafford

Sunday, 15 August 2010, 2pm



Film. Devoted to Don Stafford, one of Rotorua's most respected citizens, this documentary recounts the significant contribution he made as a historian.

Made in 2008 as part of the Rotorua Legends Series, this documentary was devoted to Don Stafford and his significant contribution as an historian – and much more. In this encore screening we hear people recount him warmly, endorsing his legacy as one of our most respected citizens. This screening is made more poignant because this much-loved figure passed away on 5 April 2010.

Professor Elizabeth Rankin – Lord Elgin and the Marbles

Sunday, 29 August 2010, 2pm



Professor Elizabeth Rankin considers the Parthenon and its sculptures from Athens' Golden Age, and the subsequent history of the temple.

In exploring how the marble works came to be in the British Museum, London, she will explore the question: Whose legacy are they?

Rotorua residents receive free admission to Rotorua Museum

Tel: 07 350 1814

To receive your free admission please bring along the following:

Some ID, eg. a drivers licence AND something with your address on it, eg. a power bill.

If you are a student with an ID card from a Rotorua School, this is all you need.

If you have Rotorua Library card we will ask to show some ID with this so we can be sure it belongs to you.

Sport and Arts

Sport Bay of Plenty

Sport Bay of Plenty has recently updated its website. It is now an excellent resource to find:

- Local sports club contact details
- Sporting events calendar and results
- Information on school sports
- Coaching initiatives

www.sportbop.co.nz

Activate for Summer Series Groups

The Activate Series is a three part series designed with beginners in mind. If you are new to Rotorua, unmotivated and wanting to get back into physical activity that's both FUN and challenging – This series is for you!

Contact Lisa to register today for an 8 week training series now.

Ph. 07 348 4125 or email lisam@sportbop.co.nz.

Dads n Lads	14 Oct – 2 Dec 2010
Women's Activator	12 Oct – 30 Nov 2010
Whanau (Family) Activator	9 Feb – 30 mar 2011

Note: These were booked out very quickly last year.

Get Active Stay Active



Get Active, Stay Active, is Rotorua's website for all community based recreational activities. Get Active, Stay Active has all you need to know about fitness programmes and recreational activities in and around the Rotorua region to help get you active.

We have all types of activities listed; anything from aerobics, aqua or water activities, bowling, children, croquet, cycling, dance, frisbee, low Impact, easy moving, mountain biking, pilates, running, seniors, sport, tai chi, walking, yoga and youth based programmes - it's all right here.

www.getactivestayactive.co.nz

For information on other events in Rotorua, go to, www.rotoruanz.com/events

Rotorua Wearable Arts



A charitable wearable arts style fashion show, the Rotorua Wearable Creations 'n Colour Awards showcase the talent of many people from throughout the Bay of Plenty region.

Now in its ninth year, it has become one of THE events on the Rotorua events calendar.

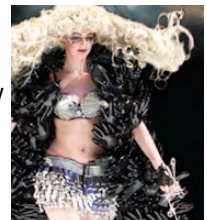
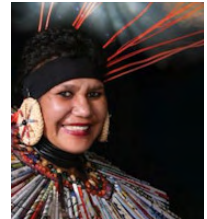
Barbara Cook, Chair of the Rotorua Creative Art Trust says as with other years, the public can expect fantastic shows, full of fun and festivity, music and dance, and of course, wonderful and sometimes weird, colour creations. www.rotoruwearable.com

Tickets to the shows can be purchased via www.ticketmaster.co.nz, or at the TicketMaster office in the Convention Centre Fenton St, Rotorua

Shows

Thu 26 Aug	Matinee
Fri 27 Aug	Gala Night
Sat 28 Aug	Awards Night

The public have until mid August to view previous entries at the Wearable Arts display in the Customer Service Centre of the Rotorua District Council, Haupapa St.



Rotorua Art Exhibition

23-28 Aug 2010 9am – 4pm

WaiOra Spa Grand Hall (foyer), Energy Events Centre Government Gardens, Rotorua



This year in the week leading up to the shows, there will be a national Art Exhibition. The exhibition of more than 200 works of art in a range of media, from paint to

photography to sculpture and print, is from a selection of sixty established and emerging artists.

Lunchtime workshops with guest artists will enable the people to interact more closely with the artist community.

As part of the exhibition, the Trust will also showcase the spectacular history of the Wearable Creations and Colour Awards by displaying, press clippings, memorabilia, and assorted past entries.

Admission to the Exhibition is free.



How to deal with Difficult or Aggressive Customers

Bought to you in conjunction with the Rotorua Multicultural Business Council and the Chamber of Commerce

Come along to a practical and useful forum being given by the New Zealand Police on how to deal with difficult or aggressive customers. There will be information to take away on the steps to take in these situations, a booklet on other useful tips for businesses as well as the opportunity to speak with Police about your concerns.

Highlights

- What to do if a customer won't pay
- How to calm down a difficult situation
- How to be an effective witness

Date: 10th August 2010

Time: 8.00pm

Venue: Gandhi Hall

Gibson Street

Rotorua

Book with:

Chamber of Commerce
The Business Hub
1209 Hinemaru Street
Rotorua

Phone: 349 8365

Fax: 349 1388

E-mail:

admin@rotorua-chamber.co.nz

Immigration NZ

News



List of Qualifications Exempt from Assessment

On 26 July 2010 the List of Qualifications Exempt from Assessment (Appendix 5) will be updated for the following countries:

- Argentina
- Hong Kong
- Indonesia
- Ireland
- Malaysia
- People's Republic of China
- South Korea
- Sri Lanka, and
- Taiwan.

The changes include:

- the addition and removal of qualifications
- changes to the level of qualifications
- the addition and removal of institutions
- the inclusion of effective dates.

We recommend that people:

- who are intending to express interest under the Skilled Migrant Category policy, or
- who have already submitted an Expression of Interest (EOI), or
- have been invited to apply for residence

check the new lists to enable them to make an informed decision on their EOI and/or subsequent residence application.

You can check out the new lists in Appendix 5 of the Immigration New Zealand Operations Manual online at www.immigration.govt.nz/migrant/general/generalinformation/operationsmanual

New Guidelines for Fee Payments and Refunds

New guidelines have been released today with details of how and when fee refunds will be paid to customers.

Who is eligible for a fee refund?

Immigration New Zealand will give fee refunds in the following situations:

- The original fee is paid in error (eg fee paid by applicant from a fee waiver country).
- An incorrect fee is paid with the application.
- The application does not meet lodgement criteria and the fee was receipted.
- A section 35A request is declined after a fee was receipted.
- An Expression of Interest (EOI) is withdrawn from EOI Pool.
- A fee refund is given as recompense for an error in service delivery.
- When the original payment has not been suspended.

Who is not eligible for a refund?

Fee refunds will not be given under the following circumstances:

- The application is declined or the client suffers hardship.
- The applicant withdraws their application after lodgement has been completed.
- The refund is for NZ\$30 or less (or local currency equivalent).
The exception to this is where the refund is given as recompense for an error in service delivery.
- The application is replaced by a second application which has a lower fee than the first.
- There may be exceptional circumstances where a refund is applicable in one of these situations; however these will be for exceptions only.

Please contact your nearest Immigration New Zealand branch if you require further information.

Tel: 0508 558 855 www.immigration.govt.nz

Back Page News

Can I come to NZ to volunteer?

You can come to New Zealand for the specific purpose of volunteering only if you are participating in the Department of Conservation's 'Conservation Volunteer' programme (Section [V3.75 of the INZ Operations Manual](#)).

Immigration policies do not otherwise provide for a visa or permit to be granted to come to New Zealand for the sole purpose of volunteering.

Please note that WWOOFing (Willing Workers on Organic Farms in New Zealand) is considered to be paid work, as WWOOFers receive food and accommodation. WWOOFers must apply for a work visa or permit.

Can I volunteer once I am in New Zealand?

If you hold a student, visitor, or work permit you can volunteer, providing you will not receive any gain or reward for the activity your volunteer for i.e. a payment or benefit. Any volunteer activity work permit holders carry out must be over and above any paid work they undertake.

If you do receive any gain or reward, unless you have open work conditions on your permit, you will be in breach of your permit.

For example:

1. If you were required to wear a uniform as part of your role, and you were provided with that uniform by the organisation, you would not have received any gain or reward and would not be in breach of your permit.
2. If you were given a clothing voucher in exchange for your voluntary activity, then you would have received a reward and you would be in breach of your permit.

If your intention is to receive a gain or reward i.e. any payment or benefit such as board and lodging or goods (e.g. food, clothing and services) that can be valued in terms of money, then you are not considered to be a volunteer.

Volunteers generally work for charities or not-for-profit organisations. Please note that:

1. WWOOFing (Willing Workers on Organic Farms in New Zealand) is considered to be paid work, as WWOOFers receive food and accommodation. WWOOFers must apply for a work visa or permit.
2. Non-paid on-the-job training before commencement of paid employment or non-paid work experience with commercial business is not regarded as voluntary work.

Please contact your nearest Immigration New Zealand branch if you require further information.

Tel: 0508 558 855

www.immigration.govt.nz



Rotorua Newcomers Network is looking for a volunteer to help bake cupcakes for the Cup Cake Day for the SPCA on Monday 30 August.

For further information, call/text Susana So at 021 1593601, or mail us at rotorua@newcomers.co.nz

<http://rotorua.newcomers.co.nz>

SETTLEMENT SUPPORT NEW ZEALAND

3rd Floor, ,
1136 Arawa Street
ROTORUA

Phone: **07 3500 533**
Email: ssnzrotorua@rdc.govt.nz
Visit: www.rotorua-living.com/settlement

For settlement information, visit: www.immigration.govt.nz/settlement



TE TARI MAHI
Department
of Labour

