



Settlement Support (Rotorua)

3rd Floor, 1136 Arawa Street,
Private Bag 3029, Rotorua
T: 07 3500 533 or 07 348 4199 ext 7054
E: ssnzrotorua@rdc.govt.nz
W: www.rotorua-living.com/settlement

Inside this issue:

- Help with Employment
- What's On
- Magma Short Film Festival 2010
- Go Exploring in the Western BOP
- Pianos in the Wild
- Regular local events
- Workshop: What are Migrants Entitled to?



Heather McAllister
Settlement Support
Coordinator

"If you have an event or something of interest that you would like to include in the newsletter, please send it to me by the 20th of the month."

This newsletter focuses on highlighting local providers of services relevant to migrants and newcomers, upcoming events and items of interest.

Are you looking for employment?

Skills are still hard to find and employers are searching and creating their own shortlists from www.newkiwis.co.nz

www.newkiwis.co.nz is a free national jobsite for skilled migrant job seekers eligible to work in NZ. Kiwi Employers seeking your skills will download your CV and contact you directly. You can search our "job vacancy" section – just be aware many employers search the database without posting their vacancy.

Don't have a CV?

Once you register your information an automated PDF CV will be created for you.

Are you eligible to work in NZ?

Visit: <http://www.immigration.govt.nz/migrant/stream/work/> to find out if you are.

If you'd like to talk in more detail about the New Kiwis website, please contact Sheaam Achmat, New Kiwis Liaison, on 09 375 3929 or email sachmat@chamber.co.nz

New Kiwis is a partnership project between the Auckland Chamber of Commerce and the Department of Labour.



Workshop: Employment Matters

If you are looking for a new or better job, and would like some help, please register your interest in this workshop by 23 April.

Topics:

- Learn about the NZ job market
- Kiwi CV Development
- Successful Interview Techniques
- Online resources
- Your rights and obligations as an employee
- What to do when something goes wrong

Format of the 2 hour FREE Workshop

Short presentations by followed by a Question and Answer Session.

This is your opportunity to get answers to your individual queries.

For further information and to register your interest, contact Heather McAllister on 07 3500 533 or at ssnzrotorua@rdc.govt.nz

English for Employees



English for Employees is for people wanting to improve their language, literacy and numeracy for the workplace.

This programme is **free** to adults who have Permanent Residence and are working either part-time, full-time, casually/seasonally or are self-employed.

For further information, contact Judy on 07 350 2395
Email: rotorua@englishlanguage.org.nz

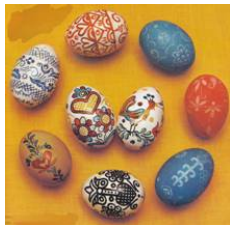
What's On!



EASTER 2-5 April 2010

Easter Craft Workshop

Sunday 28 March, 10.00 am – 1 pm; 2.00 pm – 5.00 pm
Rotorua Arts Village
Corner of Hinemoa and Hinemaru Streets, Rotorua.



Join Barbara Hochstein and enjoy a day of traditional Central European egg-inspired crafts.

Learn how to blow out, paint, decorate, gild and scratch eggs.
Create an Easter egg tree.
Make an Easter egg nest with moss and an Easter-inspired wreath.

Please bring;

White eggs (not boiled)
Craft knife (adults only)
1 or 2 paint brushes, small enough for detailed egg painting
A small, sharp pair of scissors
A sewing needle
Fresh foliage for the Easter wreath

Contributions to a shared morning tea, lunch and afternoon tea will be greatly appreciated.

Coffee, tea and juice will be provided.
(and, yes, there will be chocolate eggs!)

Cost: \$25.00 for half day; \$40.00 for full day.

Please book at Rotorua Arts Village (Tel: 07 3489 008).

Combined Church Ministries Good Friday Service

Fri, 2 April 2010, 9 – 11.30am
City Focus
Tuitanekai St, Rotorua



The annual Combined Ministries Good Friday church service will once again be held in the City Focus
FREE
Pastor Dave Moore
Tel: 07 343 6111,
Email: office@harvestapo.co.nz

Amazing Easter Race

Mon, 3 April 2010 1pm- 3pm
City Focus Tutanekai Street, Rotorua



\$11,500 prize pool!!!!
Prizes for 1st, 2nd and 3rd teams.
Plus the first 30 teams to cross the finish line win fantastic goodie bags with loads of great gifts.

Top prizes for the Best Dressed Teams too!!

Four people required on a team, with one member to be 14yrs or over, so Mums and Dads can play too!
Race revolves within the City, on foot and mostly undercover with no running!!
No Rain Cancellations for this event.
Race limited to 100 teams.
Registrations from 11am - 12:30pm. Race begins at 1pm.

New Zealand Vintage Car Club North Island Easter

Sun, 4 April 2010, 10am – 3pm
Kingsgate Hotel, Fenton Street, Rotorua



Kingsgate Hotel car park will be the site of the car display on Sunday with a gymkhana, vintage and classic cars on display, a police dog display as well as other events for your enjoyment

Cost: Adults \$5, children FREE

Touch-a-Truck

Sunday, 11 April 2010. 10am - 1pm
Arawa Race Course, (beside Rydges hotel)
Fenton Street, Rotorua



Board a bulldozer, play in a police car or fire up a fire engine, plus sausage sizzle and lots more.

Grab the kids and come on down. A Save the Children fundraiser.

Cost: \$2

For events in Rotorua, go to www.rotoruanz.com/events

Beware of Trading Laws In New Zealand

There are 4 days on which there are trading restrictions:

2 April Good Friday 2010
4 April Easter Sunday 2010
25 Dec Anzac day (but only in the morning)
25 Dec Christmas Day

The law currently allows only certain shops, which provide essential supplies, to open on these days. These include shops providing food ready to eat, souvenir and duty free shops, pharmacies, and petrol stations.

However, you can shop on these days in Taupo. It has received an exemption from the trading laws.

Also note that there is a "Public Holiday Surcharge" when eating out over the long weekend. Usually it is an extra 15% on your bill.

Rotorua Film Festival 2010

Starts Thursday 29 April

Magma Short Film Festival 2010

Magma Short Film Festival returns April 29 to the Shambles Theatre, Rotorua.

From over 150 films submitted from 16 countries 51 films will screen covering issues as diverse as immigration, love and divorce, cellular phones, rugby, murder and laundry.

Founded in 2006, with RDC arts officer Kiri Jarden and Juliet Boone directing, the festival was a way for us to bring and share original cinema with the Rotorua audience. "At that stage Juliet had just created the Vegas Film Club and reignited the Basement Cinema, a small digital theatre still operating today.

Simon Marler from Script to Screen coordinates workshops for Magma in 2010" adds Ms. Jarden.

Screenwriter Nick Ward has confirmed a workshop titled "Great Characters make Great Stories"- How to write unforgettable characters. Ward is the writer behind characters from "Stickmen", the Rose family and friends from "Second-Hand Wedding" and characters such as Aurora and Aaron Spiller from Outrageous Fortune.

"Nick will reveal his secrets for crafting characters that will make your screenplay come alive" says Ms. Jarden, "Nick is very entertaining and engaging. This is a workshop that will give writers the tools and inspiration to take their writing to the next level."

Writer and film developer Hone Kouka from the NZ film Commission will be also be presenting a workshop titled An Introduction to Screenwriting and Film Development. "Workshops in tandem with industry guests make the festival rich and rewarding for attending film makers. We have a great festival line up" says Ms. Jarden.

Magma starts Thursday April 29 at The Shambles Theatre at 8 Amohau St (next to Pak'n Save).

Local musician Rosanna Dedman will be entertaining ahead of the evening programme.

The programme will be available on line at www.magmafilm.org.nz, and hard copies can be collected from McLeod's Booksellers, the Rotorua District Library and City Focus.

Interested in volunteering at Magma?

Contact info@magmafilm.org.nz

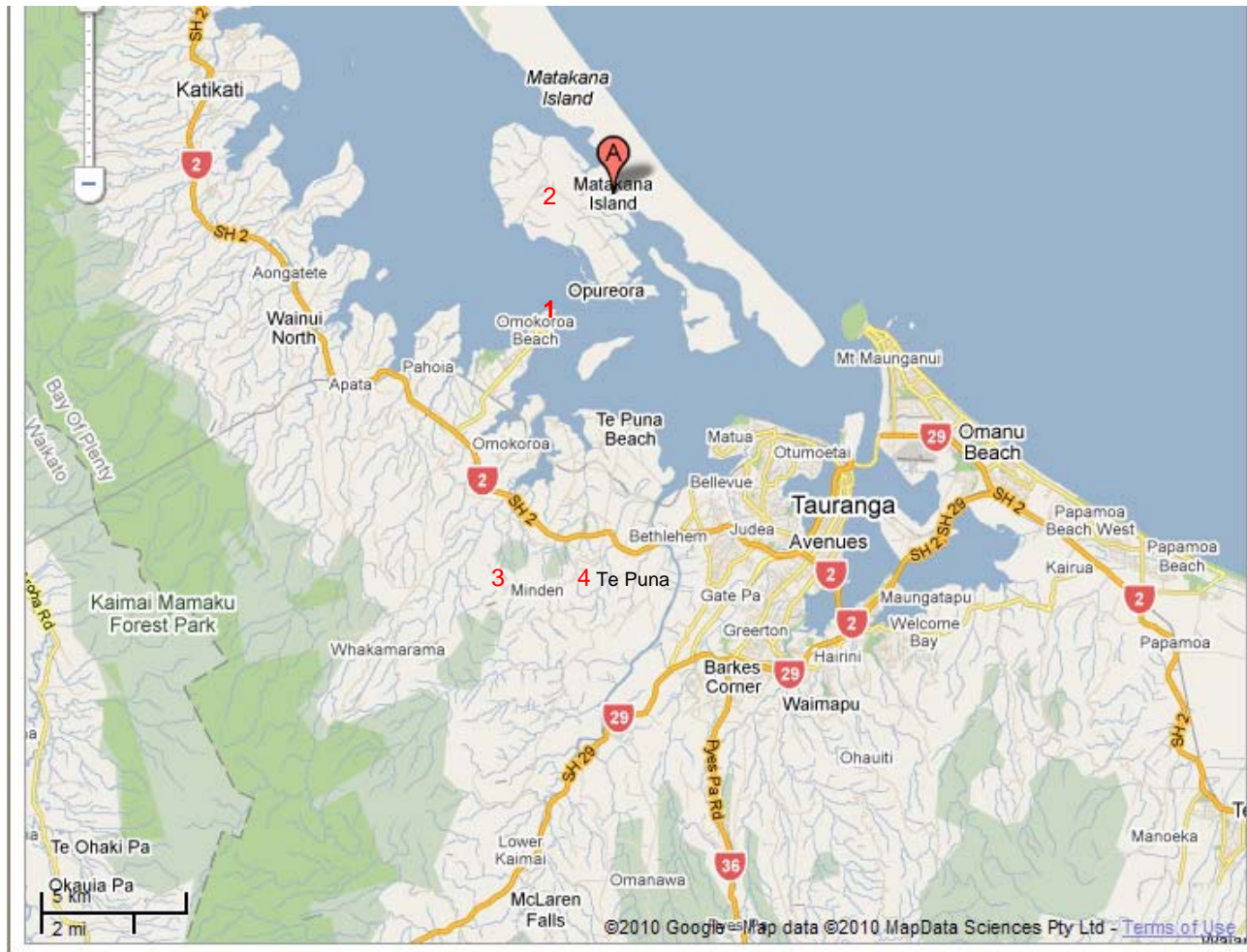
MAGMA

short film festival



Explore the Western Bay of Plenty

Have you explored the Western Bay of Plenty? Here are some activities and events for a great day out?



1. Omokoroa Beach and Jetty

Safe beaches, walks, cafes and the departure point for the Matakana Island Fun –Walk Day (see next page)

2. Matakana Island

This area is of cultural and historical significance. It has been designated as a Conservation Park. Attractions include Walking Trails, beaches, rare species of plant and wildlife, scenic views, and the restored 1914 wagon drawn by Clydesdale horses.

3. Minden Lookout Point

Between Katikati and Tauranga is Te Puna, where you turn right and drive up to the Minden Lookout. Just 20 minutes from Tauranga City Centre. At 286 metres above sea level, this viewing point delivers unobstructed views along the Bay of Plenty coast and out to sea, over orchards, farmland, hill country and the suburbs of Tauranga.



View from Minden Lookout

4. Te Puna Quarry Park

The park has been developed from a disused quarry into a world class park. Featured throughout the Park, are sculptures by local artists. The walking tracks are easy for the moderately fit. This is a place to enjoy, a place of nature and tranquility, of stunning views and great art. The park is open every day during daylight hours. Admission is free

The park is situated at the end of Quarry Road, off State Highway 2, 15km north of Tauranga. www.quarrypark.org.nz

Matakana Island



Matakana Island Walk-Run Day 18th April 2010

Entries limited - first in basis

Make a day of it with family and friends.
Enjoy a walk or run and experience the
culture of Matakana Island.

What to bring

Koha for school kapa haka performance. Suitable clothing and footwear. Drinks and snacks as required (water stops on course)

All monies go towards the Marae development and local sports clubs.

Course

8km walk (mixed terrain)

12km run (mixed terrain)

Transport

Meet at Omokoroa Jetty at **8:30am** to Barge leaves at **9:00am**.

Return to Omokoroa from **2:30pm**

May be some waiting.

Adults: \$5 return Children free.

Costs

Adults \$30 (includes Lunch)

Children: \$10 (includes Lunch)

Prizes

Heaps of great spot prizes.

Contact

Penny at 'City on its Feet'
phone 07 578 9610 or
email pennym@sportbop.co.nz
for more information.



Cancellations from
6:30am on 95BOPfm.



Be part of the community

Pianos in the Wild



Five upright pianos will be placed in public spaces for the next six weeks for any passer-by to enjoy playing or listening to. This Rotorua project, inspired by the art installation, "Play Me, I'm Yours" by artist Luke Jarram, follows events in the UK, the Americas and Sydney between 2009-2009

Jarram's work set out to question the ownership and rules of public space. The artist has given the nod to a smaller scale reproduction of the project here in Rotorua; a first for New Zealand. Pianos in the Wild! is a collaboration between Pheasant Plucker owner and music aficionado Ivan Purvis and the Rotorua District Council.

The pianos are set to go out the week of March 22 and will be located at Jean Batten Square, the City Focus, Eat Street, the corner of Tutanekei and Arawa Streets and at the Lakefront. To learn more about "Play me, I'm Yours" visit www.streetpianos.com

Saturday Market in Kuirau Park

The Rotorua Rotary North holds a Saturday Morning Market from 6:00 a.m. through 1:00 p.m. at Kuirau Park.

The market has a plethora of stalls selling fresh vegetables, cooked food to eat there, clothes, used goods, new goods and much more.

It is a great place to meet people, to experience some of the local produce and to open your own stall if that is your inclination.

For those interested in having a stall at the market, please contact Rick Mansell at 348-7385 or e-mail at helen.rick@ihug.co.nz.



Help Raise funds for the Ronald McDonald Family Retreat

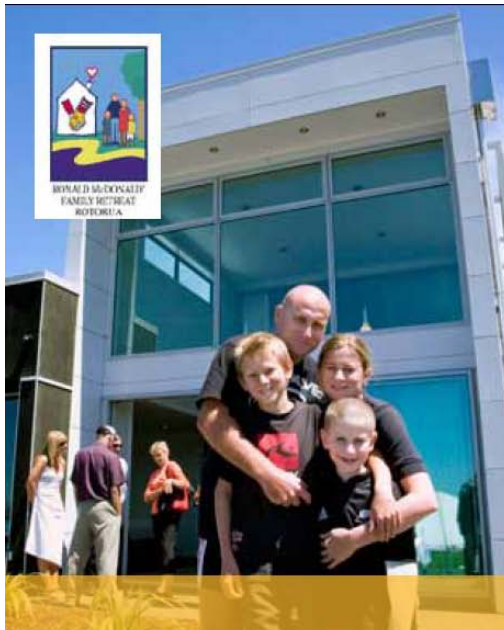
This is a fabulous opportunity to meet other new comers and network while enjoying a quality 3 course meal in one of our local restaurants or lodges.

For your consideration.

Please phone to reserve your place as we believe we will be oversubscribed for this Inaugural event.

We will be having a newcomers table. You have a choice. Tell us whether you would like to sit with other newcomers or with locals.

Transport will be provided to the out of town venues.



Support a Great Cause by having a night out with friends

Ronald McDonald Family Retreat
Supper Club



Wednesday 26th May 2010

Starts at 6pm with Cocktails and Canapes and a live auction at the Novotel Rotorua Lakeside followed by a random draw of Restaurants and Lodges for dinner at 7.30pm.

Proceeds going entirely to the operational costs of the Ronald McDonald Family Retreat right here in Rotorua. Tickets \$95 per person, enjoy a three course meal (dinner beverages not included).

contact Deb Bell on 0274 578485 or email deb@debbell.co.nz for details

Events at the Arts Village

Beginners Ukulele for Ladies and Gentlemen

Mondays, 19 April 19 to 17 May 2010, 5.30 to 7pm

Presented by Jill Briar

Over the 5 weeks of this basic ukulele course students will learn to tune, hold and strum a ukulele. They will learn basic chords in 3 keys and a number of songs that are easy to sing and play. Some context given eg. existing bands, history of ukulele etc.

This would suit those who have little or no experience and want to proceed slowly. Practise is important.

Own ukes please. Make sure they fit your hand and that the tuning keys don't slip.

Class size: 10. Cost \$100.

Singalong Session for Ladies and Gentlemen

Thursdays, 22 April- 3 June 2010, 5.30 to 7pm

Presented by Jill Briar

This 7 week course offers more chords, more keys, more strums and more complex songs.

Students are encouraged to bring songs that interest them although there will be a set repertoire to facilitate skill development.

Everyone is expected to sing along and good fun is a given. Practise required for those wanting to make progress.

Own ukes, naturally.

Class size 10 Cost \$ 150.

For both courses, contact Rotorua Arts Village on (07) 3489008, Email office@rave.org.nz

Corner Hinemoa & Hinemaru St,
Rotorua

YOUth Fest

Expression of Interest wanted, are you and Artists or Person interested in:

Sharing
Teaching
Demonstrating
Performing

Your ARTFORM to the YOUth of Rotorua

Then contact Grace on 07 348 9008 ext 718 or manager@rave.org.nz

A one day event is planned to launch National Youth Week on May 22nd
Target Audience is the Youth of Rotorua Aged 13+

*"If you have never tried the classic art forms of Pottery/Acrylic Painting/Portraiture
OR
the New art forms Turntabling / Aerosol Art/
How to make Music Videos/
Hip hop dancing/Wearable Arts etc...
then
THIS IS THE DAY to have a go!"*

YOUth Fest

May 22

1pm – 5pm

Age: 13+

“Hands on Art, Old & New Art forms”

FREE

@ Rotorua Arts Village

Grace Hoet

ph: 64 7 348 9008

fax: 64 7 343 7108

Corner Hinemoa & Hinemaru St

www.rave.org.nz

Back Page News

Workshop: What are Migrants Entitled to?

Friday, 14 May 2010, 2-4pm
Community Link, 1207 Pukuatua Street, Rotorua

Topics:

- Applying for an IRD Number
- Working for Families
- Student Loans
- Tax Refunds
- The donations Tax Credit (Rebate) & Payroll giving
- Kiwisaver
- Online Services
- Pensions
- Emergency financial assistance
- Question and answer session

Presented by:
Inland Revenue Dept (tax) & Work and Income

To register, contact Heather McAllister
on 07 3500 533 or at ssnzrotorua@rdc.govt.nz



Lunchtime Series

This is an opportunity to gain greater understanding and insight into the challenges of setting in a new homeland.

26 March 2010

Meet Nicole from Mauritius

- When:** Every last Friday of the month
Time: 12.10pm – 12.50pm
Venue: Rotorua Arts Village (RAVE),
1240 Hinemaru Street, Rotorua
Cost: Bring your own (BYO) lunch,
refreshments provided

Interested?

If you would like to participate, attend, or would like further information, contact:

Judy on 350 2395, judy.winiata@englishlanguage.org.nz

Heather on 350 0533, ssnzrotorua@rdc.govt.nz

Update from the first 'Neighbours in Our Community'



Yulia and Luda

The first 'Neighbours in Our Community' was held on 26 February 2010. We were entertained by Yulia and Luda from the Ukraine.

It was a colourful spectacle, as they shared their experiences, language and culture.

Luda arrived in Rotorua three years ago. She says that being able to speak English is vital when settling in. She is grateful to friends, family and local organisations that have supported her, but also acknowledges the hard work she put in at the start.

Yulia has only been living in Rotorua for 4 months, She is both an excellent baker and artist. Luda has been assisting Yulia meet locals and others from Eastern European countries.

Often the common language is either English or Russian.

SETTLEMENT SUPPORT NEW ZEALAND

3rd Floor, ,
1136 Arawa Street
ROTORUA

Phone: **07 3500 533**
Email: ssnzrotorua@rdc.govt.nz
Visit: www.rotorua-living.com/settlement

For settlement information, visit: www.immigration.govt.nz/settlement

